



Kernel for EDB

“Easy to Use Exchange Server Data Recovery Tool for
corrupt EDB Files”

Product Guide

Table of Contents

- 1. About Kernel for Exchange4
 - 1.1 Brief about this User Guide4
 - 1.2 Introducing Kernel for Exchange4
 - 1.3 Key Features5
 - 1.4 System Requirements6
- 2. Install and Uninstall.....8
 - 2.1 Install Kernel for Exchange8
 - 2.2 Uninstall Kernel for Exchange8
 - 2.2.1 Uninstall from Windows Start Menu.....8
 - 2.2.2 Uninstall from Control Panel.....9
- 3. Understanding the User Interface10
 - 3.1 Menu Bar10
 - 3.2 Tool Bar11
 - 3.3 Left Panel11
 - 3.4 Right Panel12
 - 3.5 Status Bar13
 - 3.6 Buttons Used14
- 4. Using Kernel for Exchange Server15
 - 4.1 Recover Corrupt Exchange Server Database.....15
- 5. Download Purchase and Register20
 - 5.1 Free Trial Download.....20
 - 5.2 Purchase and Register.....20
 - 5.3 Support21
- 6. Legal Notices.....22
 - 6.1 Copyright Notice22
 - 6.2 Trademarks22
 - 6.3 Disclaimer Notice.....22
 - 6.4 License Agreement.....22



Table of Figures

Figure 3.1: File Menu	10
Figure 3.2: Help Menu	10
Figure 3.3: Left Panel	12
Figure 3.4: Right Panel.....	13
Figure 3.5: Status Bar	13
Figure 4.1: Software Home Page.....	15
Figure 4.2: Mailboxes of the Selected EDB File.....	16
Figure 4.3: Recovered E-mails and Other Items	17
Figure 4.4: Browse for Folder Dialog Box.....	18
Figure 4.5: Saving Status.....	19
Figure 4.6: Saving Message	19

1. About Kernel for Exchange

1.1 Brief about this User Guide

Welcome to the user guide of Kernel for Exchange: outstanding, prominent, and effective Exchange Server database recovery software. The user guide has been developed to provide users step by step guidance for using Kernel for Exchange software. Therefore, we suggest you to carefully read the user guide before you start using Kernel for Exchange software. The user guide comprises following main sections:

Introduction: Briefly explains Kernel for Exchange software, its benefits, and prominent features. This section also provides information about the system requirements for successful installation and execution of Kernel for Exchange software.

Install and Uninstall: Explores processes to install and uninstall Kernel for Exchange software.

Understanding the User Interface: Explores the user interface of Kernel for Exchange software for its easy and perfect use. This section lets you know about accessing various menus and sub-menus for performing various Exchange Server database recovery related tasks.

Using Kernel for Exchange: Illustrates processes that are used for repairing the damaged Exchange Server database files and recovering data from them.

Download Purchase and Register: Provides information about downloading, purchasing, and registering Kernel for Exchange software. Moreover, information regarding technical support is also provided in this section.

Legal Notices: Provides information about copyright notices, trademarks, disclaimer, and license agreement related to Kernel for Exchange.

1.2 Introducing Kernel for Exchange

MS Outlook is the most commonly used e-mail client in small as well as big organizations. MS Exchange server stores e-mails and other related items of MS Outlook in MS Exchange Server database (EDB) files. There are times when EDB database gets corrupt or damaged and the user fails access e-mails, which disturbs communication between employees of an organization. In case you face such a problematic situation, what will you do to come out of that situation? Solution to get rid of such problematic situation is Kernel for Exchange software. Kernel for Exchange is the most effective and affordable database recovery software, which is used to recover emails from corrupt or damaged MS Exchange Server database (EDB) files.

Kernel for Exchange impeccably recovers all user mailboxes and their e-mails with other related items from corrupt EDB file. The software not only recovers e-mails and other related items but also saves them into .PST format, so that the recovered items can be easily accessed with MS



Outlook. Kernel for Exchange perfectly repairs the .EDB files that are corrupt, damaged, or inaccessible because of the following reasons:

- Exchange Server down time
- Exchange Server Dirty Shutdown
- Improper Server shut down
- Hard disk errors
- Accidental deletion of mail boxes
- Accidental e-mails deletion
- File's header information has been corrupted
- Exchange Server error 550
- Unable to initialize the Microsoft Exchange Information Store service
- JET_errRecordNotFound error
- The key was not found error
- Jet_errRecordDeleted error
- All types of Jet Engine errors
- Duplicate identifiers
- Error -528 initializing the Microsoft Exchange Server Information Store database
- Virus attacks
- File size errors
- 614. All future database updates will be rejected. Information Store (3420) Unable to rollback operation #65678740 on database C:\EXCHSRVR\mdbdata\priv1.edb. JET_errKeyDuplicate Illegal duplicate key. JET_errReadVerifyFailure Read verification error 4294966

1.3 Key Features

Kernel for Exchange is unique and fast Exchange database recovery software with following prominent features:



- **Effective and Fast:** Performs fast and effective recovery from damaged and inaccessible EDB database files. Moreover, Kernel for Exchange can recover permanently deleted e-mails and mail boxes.
- **Complete Recovery:** Recovers items from the damaged EDB database file in fraction of minutes with full accuracy. The software is efficient to recover e-mail folders, calendars, appointments, journals, images, attachments, zipped attachments, notes, drafts, tasks, and junk e-mails.
- **Preserves Formatting:** Maintains structure and formatting of the recovered e-mails and folders. Moreover, the software maintains the properties, such as To, Cc, Bcc, Time, and Date of the recovered database items.
- **Recovers Encrypted Files:** Efficiently repairs and recovers encrypted files. The software is also able to recover password protected files.
- **Hierarchical View:** Displays the recovered e-mails and other related items in hierarchical format for their easy view. Kernel for Exchange displays the content of the selected e-mail or other related item to let you verify the structure and formatting of the items recovered.
- **Version Support:** Supports MS Exchange Server 2003 and 2007, 2000, 5.0 and 5.5 and MS Outlook 97, 98, 2000, 2003 and 2007.
- **User Friendly Interface:** Kernel for Exchange has interactive user interface, which doesn't require any technical skill to operate and manage.
- **Support:** Kernel for Exchange provides round the clock technical support, so that users can contact with our technical team for troubleshooting the software related problems.

1.4 System Requirements

Before you start installing Kernel for Exchange software on your computer, make sure that your computer system meets the following system requirements:

System Requirements

- Pentium Class Processor
- 64 MB RAM (128 MB recommended)
- 10 MB of free disk space for software installation
- Enough disk space to store the recovered items

Supported MS Exchange Server Version

- MS Exchange Server 2003




- MS Exchange Server 2007
- MS Exchange Server 5.0
- MS Exchange Server 5.5

Supported MS Outlook Versions

- MS Outlook 97
- MS Outlook 98
- MS Outlook 2000
- MS Outlook 2003
- MS Outlook 2007

Supported Platforms

- MS Windows 9X
- MS Windows ME
- MS Windows NT
- MS Windows 2000
- MS Windows Vista
- MS Windows XP

 MS Outlook must be installed on your computer system for successful use of the software to preview PST file items. If in case MS Outlook is installed but is not configured with any profile, software will display errors. To configure dummy user profile in MS Outlook and access the PST file, refer to the following link: <http://www.nucleustechnologies.com/how-to-configure-outlook-pop3-account.html>

You must check your computer configuration to meet the preceding system requirements for the successful installation of the software.

2. Install and Uninstall

2.1 Install Kernel for Exchange

Now, when you are well acquainted with the features of Kernel for Exchange software let us install the software. Before installing the software please ensure that your computer system meets the system requirements and the software installer file is available on your computer. If the software installer file is not available of your system, download it. One can easily download the installer file of Kernel for Exchange software from:

<http://www.nucleustechnologies.com/download-exchange-server-recovery.php>


After you have downloaded the installer file, execute following steps to install the software:

1. Double-click the **Kernel for Exchange** installer file.
2. Follow the on-screen instructions. The “**Completing the Kernel for Exchange Server Setup Wizard**” message appears on the software installation screen when the installation process will be completed.
3. Click the **Finish** button to complete the software installation process and launch Kernel for Exchange.

2.2 Uninstall Kernel for Exchange

There can be a situation when you need to uninstall Kernel for Exchange. The software can be uninstalled from your computer in the following two ways:

- Uninstall from Windows Start Menu
- Uninstall from Control Panel

 Before you start uninstalling Kernel for Exchange makes you sure that the software is not running in system background.

2.2.1 Uninstall from Windows Start Menu

Perform the following steps to uninstall Kernel for Exchange from Windows Start menu:

1. Click **Start > All Programs > Kernel for Exchange Server > Uninstall Kernel for Exchange Server**. A warning message will be displayed to let you confirm the un-installation process.

2. Click the **Yes** button to continue the un-installation process. The “**Kernel for Exchange Server was successfully uninstalled from your computer**” message appears.
3. Click the **OK** button to complete the un-installation process.

2.2.2 Uninstall from Control Panel

Execute the following steps to uninstall Kernel for Exchange through Control Panel:

1. Click **Start > Control Panel**
2. Double-click **Add or Remove Programs** icon.
3. Select **Kernel for Exchange** and click the **Remove button**. A warning message will be displayed.
4. Click the **Yes** button to continue the software un-installation process. The “**Kernel for Exchange Server was successfully removed from your computer**” message appears.
5. Click the **OK** button to complete the un-installation process.

3. Understanding the User Interface

3.1 Menu Bar

Menu bar of Kernel for Exchange comprises the following main menus:

- File Menu
- Help Menu

File Menu

File menu of Kernel for Exchange is shown in Figure 3.1:



Figure 3.1: File Menu

Table 3.1 lists the options of **File** menu:

Option	Description
Open	Opens a dialog box to select the corrupt or damaged EDB file
Save	Saves the recovered emails
Exit	Closes Kernel for Exchange

Help Menu

Help menu of Kernel for Exchange is shown in Figure 3.2:

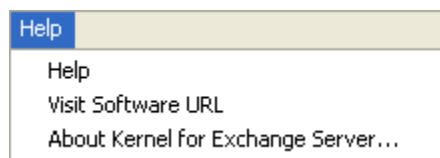


Figure 3.2: Help Menu




Table 3.2 lists the options of **Help** menu:

Option	Description
Help	Displays the user's help guide of Kernel for Exchange
Visit Software URL	Opens the homepage of software Website
About Kernel for Exchange Server	Displays the software version and support related information

3.2 Tool Bar

Tool bar consists of buttons that work as short cuts for various options available in the main menus of Kernel for Exchange.

Table 3.3 lists the buttons available on the Tool bar of Kernel for Exchange:

Button	Button Name	Description
	Open	Opens a dialog box to select the corrupt or damaged EDB file
	Help	Displays the user's help guide of Kernel for Exchange
	Software URL	Displays the software version and support related information.

3.3 Left Panel

Left panel of Kernel for Exchange displays email folders recovered from the damaged Exchange Server database file. The software displays the folders recovered from the corrupted EDB file in a tree like structure, so that you can easily navigate through them and view their content. Figure 3.3 shows the left panel of Kernel for Exchange:

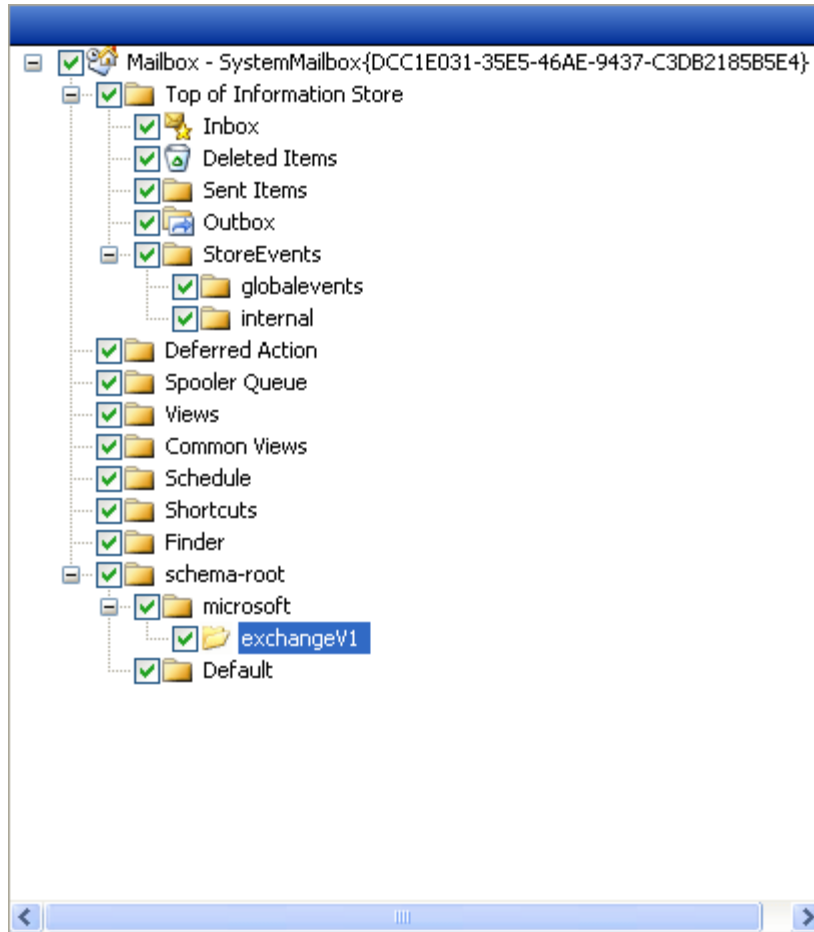


Figure 3.3: Left Panel

3.4 Right Panel

Right panel of Kernel for Exchange displays emails of the selected folder, which has been selected in the Left panel. Figure 3.4 displays the Right panel of Kernel for Exchange:

No	From	Subject
1	Administrator	abstract_d.xml
2	Administrator	account_ct.xml
3	Administrator	adminfolderdescription_ex.xml
4	Administrator	alldayevent_c.xml
5	Administrator	appointment_cc.xml
6	Administrator	approved_h.xml
7	Administrator	Author_o.xml
8	Administrator	baseschema_s.xml
9	Administrator	bcc_m.xml
10	Administrator	bday_ct.xml
11	Administrator	billinginformation_ct.xml
12	Administrator	binding_frm.xml
13	Administrator	browser_frm.xml
14	Administrator	businesshomepage_ct.xml
15	Administrator	bustatus_c.xml
16	Administrator	Bytes_o.xml
17	Administrator	bcc_h.xml
18	Administrator	calendarmessage_cc.xml
19	Administrator	callbackphone_ct.xml
20	Administrator	Category_o.xml
21	Administrator	cc_h.xml
22	Administrator	cc_m.xml
23	Administrator	Characters_o.xml
24	Administrator	childcount_d.xml

Figure 3.4: Right Panel

3.5 Status Bar

Status bar is situated at the bottom of the software. It displays the processing status when you save all or some of the selected email folders from the recovered EDB database file. Figure 3.5 shows the Status bar of Kernel for Exchange:

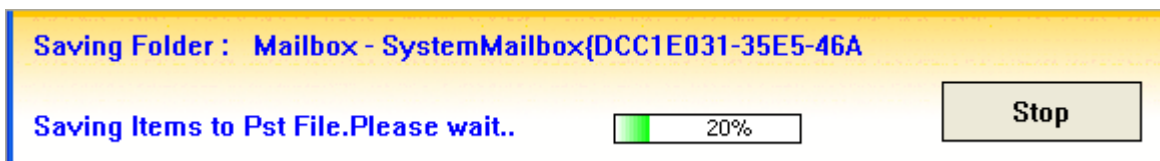



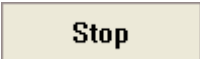
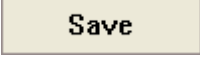


Figure 3.5: Status Bar

3.6 Buttons Used

There are various buttons used in Kernel for Exchange software to let you easily and quickly perform EDB database recovery related tasks. Table 3.4 lists the buttons used in Kernel for Exchange software:

Button	Button Name	Description
	Browse	Opens a dialog box to let you select the damaged EDB file
	Next	Takes you one step forward during the EDB recovery process
	Back	Takes you one step back during the EDB recovery process
	Stop	Stops the saving process
	Save	Saves recovered emails and folders

4. Using Kernel for Exchange Server

4.1 Recover Corrupt Exchange Server Database

Now, when you are well acquainted with the user interface of Kernel for Exchange software let us discuss the process to repair the damaged Exchange database file and recover e-mails and other related items from it. Perform the following steps to recover e-mails and other related items from the damaged EDB file:

1. Click **Start > All Programs > Kernel for Exchange Server > Kernel for Exchange Server**. The software home page appears, as shown in Figure 4.1:

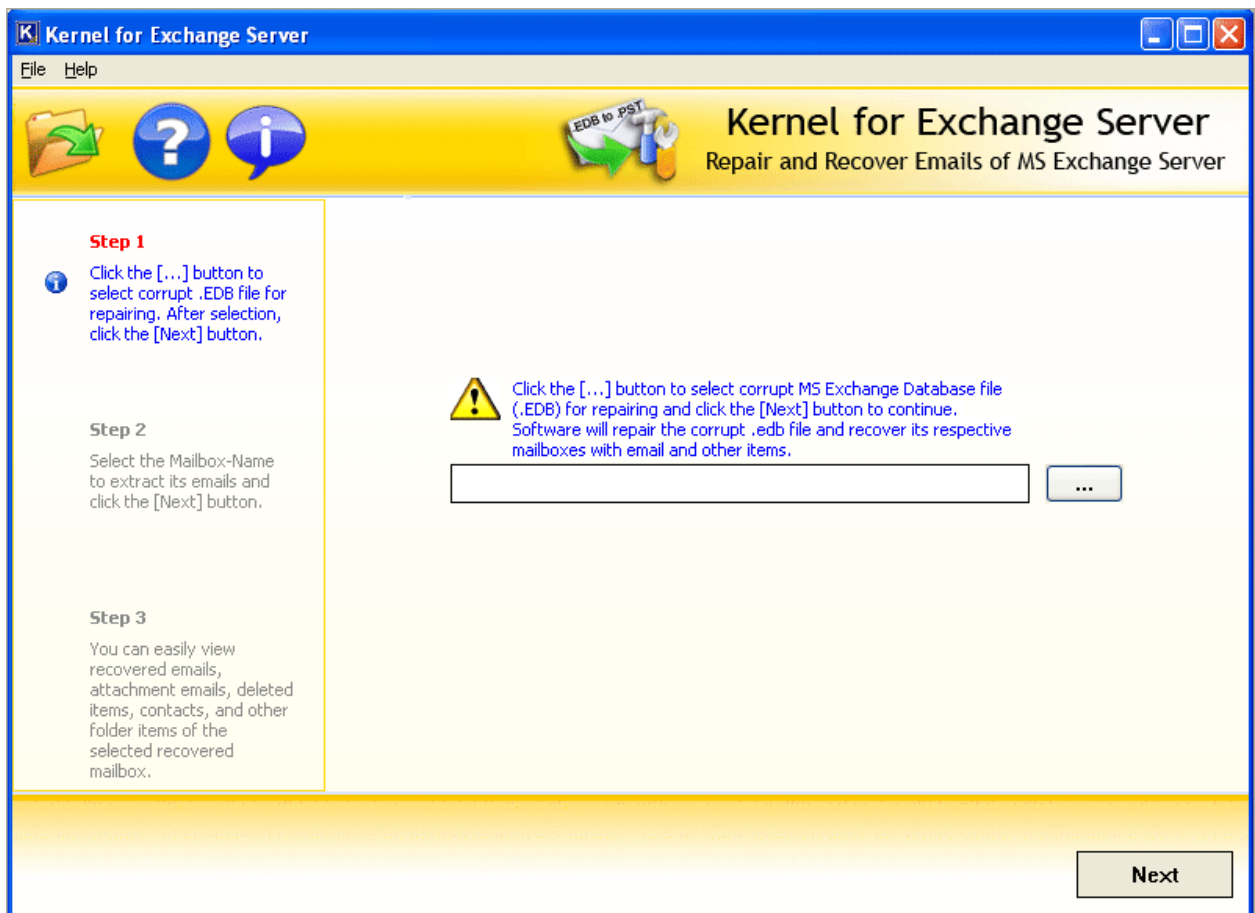


Figure 4.1: Software Home Page

2. Click the **Browse** () button or select the **Open** option from **File** menu to select the damaged EDB database file.

3. Click the **Next** button to continue the process.
4. The software starts scanning the selected EDB database file. Once the scanning process is complete, the software displays the mailboxes stored in the selected EDB database file:

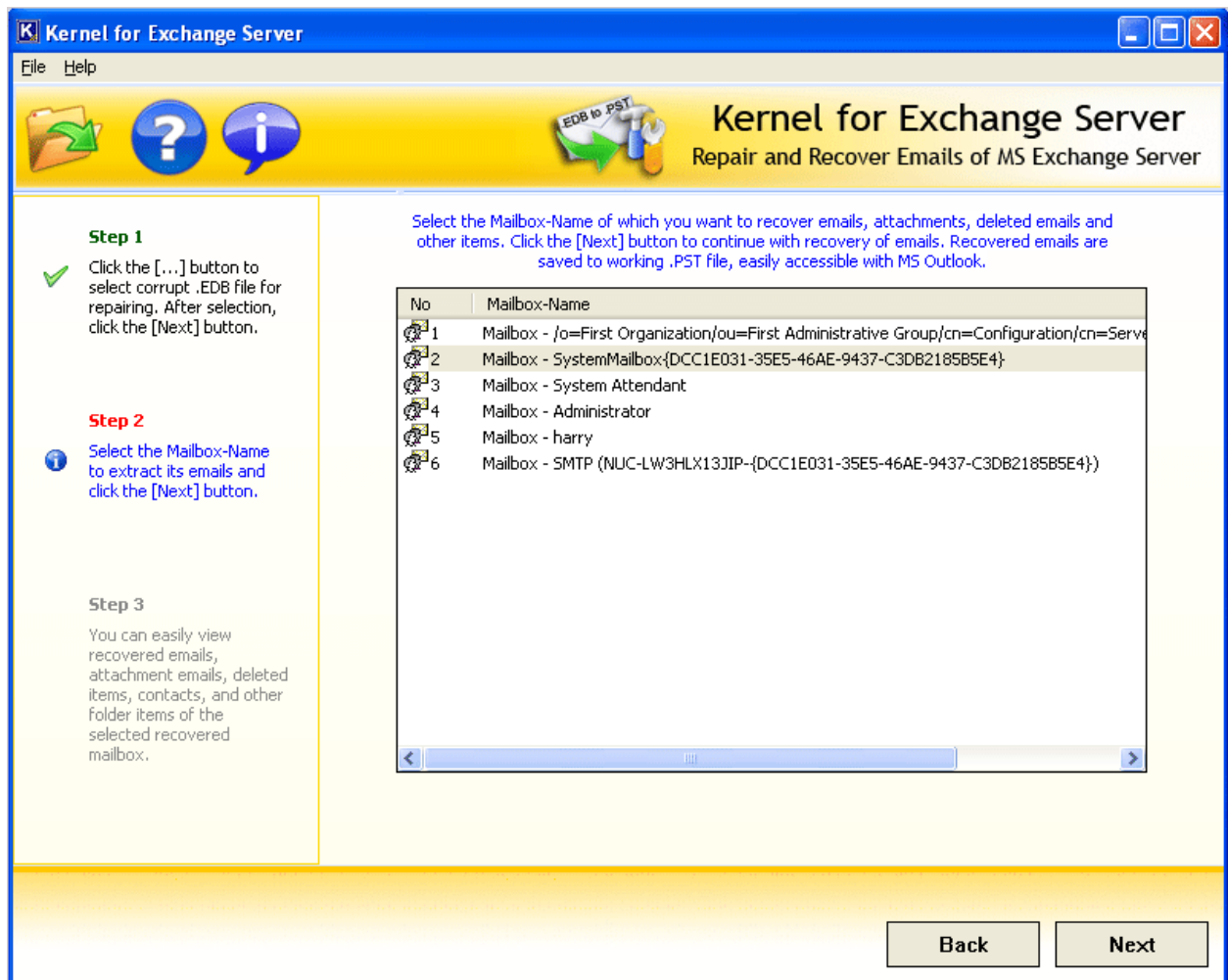


Figure 4.2: Mailboxes of the Selected EDB File

5. Select the mailbox that you want to recover and click the **Next** button. The software displays the e-mails and other related items in the **Left** pane, as shown in Figure 4.3:

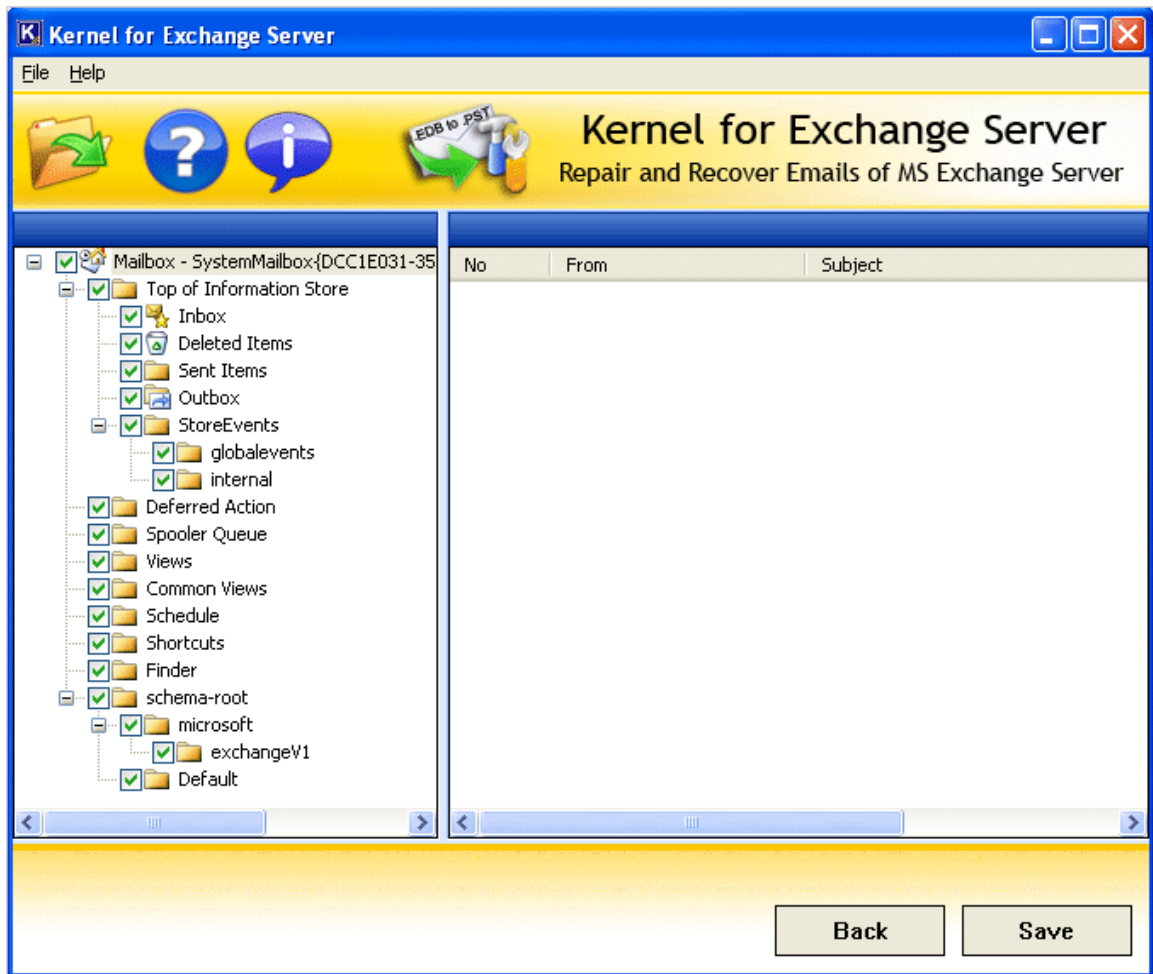


Figure 4.3: Recovered E-mails and Other Items

Now, you can either save all or selected recovered emails.

6. Click the **Save** button after selecting the items you want to save. The **Browse for Folder** dialog box appears to let you select the location to save the recovered emails:

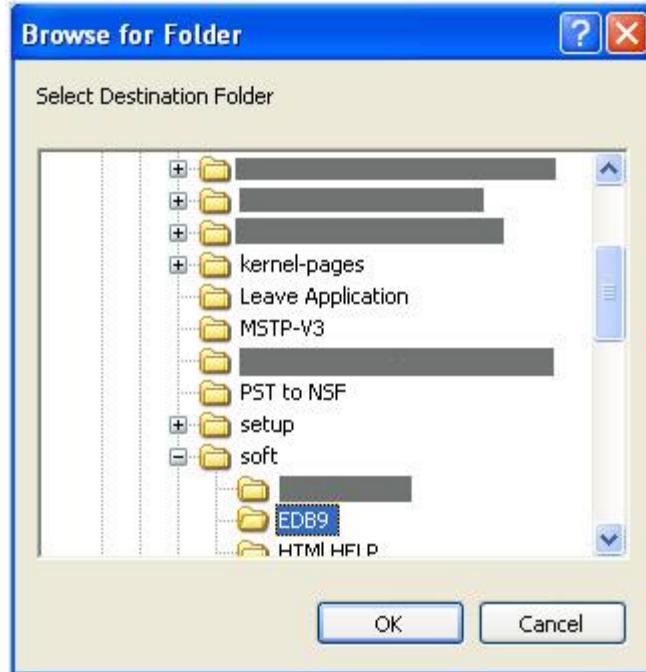


Figure 4.4: Browse for Folder Dialog Box

7. Select the location to save the recovered EDB database file and click the **OK** button.
8. The software starts the saving process and displays the saving status in the **Status** bar, as shown in Figure 4.5:

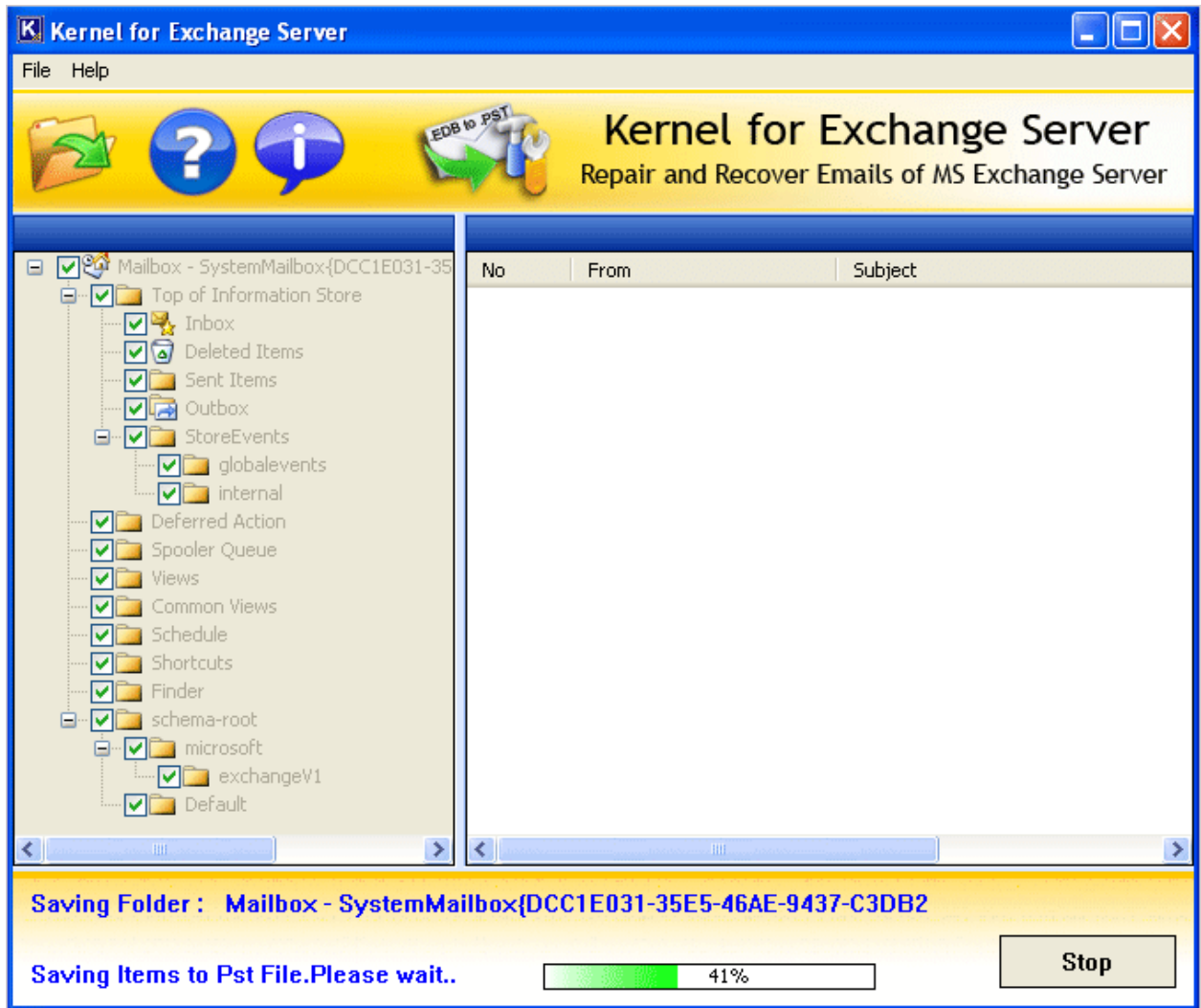


Figure 4.5: Saving Status

Once the saving process is complete, “**Saving Finished Successfully**” message appears, as shown in Figure 4.6:

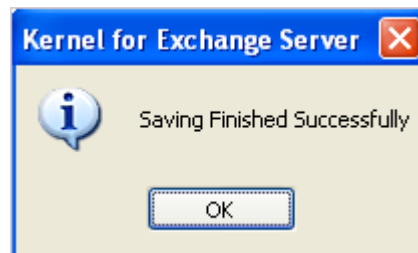


Figure 4.6: Saving Message

9. Click the **OK** button to complete the process of saving recovered emails.

10. Now the saved PST file can be accessed with MS Outlook and remounted on MS Exchange Server. If in case, you are unable to view PST file content, make sure that MS outlook is installed and configured on your computer system. To configure dummy user profile in MS Outlook, visit the following link: <http://www.nucleustechnologies.com/how-to-configure-outlook-pop3-account.html>

5. Download Purchase and Register

5.1 Free Trial Download

The trial version of Kernel for Exchange is also available, with which you can evaluate and analyze the capabilities of the software. The trial version only previews e-mails and other related items recovered from the damaged EDB database file but doesn't allow you to save them.

5.2 Purchase and Register


You must purchase **Full** version of Kernel for Exchange software in order to save the recovered e-mails and other related items. The **FREE** trial version of Kernel for Exchange only displays the preview of the recovered files and folders but doesn't allow you to save them. To save them, you will need to purchase **Full** version of Kernel for Exchange.

You can purchase the software through Nucleus Data Recovery website:

<http://www.nucleustechnologies.com/buy-exchange-server-recovery.php> (encrypted and secure site).

Payment and Delivery

- Purchase the Kernel for Exchange software from our authorized resellers which provide number of payment options for your ease - Paypal, FAX, Credit Card, E-cheque, Pay Order, etc.
- After making the purchase transaction with our resellers, we send you an email, which consists of activation details and download link of the Full version comprising of the activation code. This email is sent to the email address, which you have used while processing the purchase transaction with our resellers.

 We suggest you not to use false e-mail address while making the purchase transaction

For any other details related to purchase process, software activation process, email us at: sales@nucleustechnologies.com

5.3 Support

We have an extensive and efficient support system to assist our customers with all issues related to using Kernel for Exchange. The software comes with an embedded help manual that can be accessed by clicking **Help > Help** in the menu-bar. You can also press the F1 key on the keyboard of your computer to access the embedded help manual of Kernel for Exchange.

Online Help:

You can access the online help for Kernel for Exchange at

<http://www.nucleustechnologies.com/Online-Helps.html>

Knowledgebase:

There is extensive knowledgebase which deals with common queries relating to the software:

Visit knowledgebase: <http://www.nucleustechnologies.com/supportdesk/>

We also have live support wherein you can chat with our software experts at <http://www.nucleustechnologies.com/Support.html>

To talk on phone with our software experts call:

Helpline:

+91-9818725861
1-866-348-7872 (Toll Free for USA/CANADA)

You can also email us about your queries at:

sales@nucleustechnologies.com for Sales

support@nucleustechnologies.com for Support

contact@nucleustechnologies.com for General Queries



6. Legal Notices

6.1 Copyright Notice

NUCLEUS DATA RECOVERY.COM PRIVATE LIMITED, Nucleus Kernel, accompanied user manual, and documentation are copyright of NUCLEUS DATA RECOVERY.COM PRIVATE LIMITED, with all rights reserved. Under the copyright laws, this user manual cannot be reproduced in any form without the prior written permission of NUCLEUS DATA RECOVERY.COM PRIVATE LIMITED. No Patent Liability is assumed, however, with respect to the use of the information contained herein.

© Nucleus Data Recovery.Com Private Limited. All rights reserved.

6.2 Trademarks

Nucleus Kernel ® is a copyright work of NUCLEUS DATA RECOVERY.COM PRIVATE LIMITED

Windows 95®, Windows 98®, Windows ME®, Windows NT®, Windows 2000 Server®, Windows 2000 Advanced Server®, Windows 2003 Server®, Windows XP®, MS Outlook, and MS-DOS are registered trademarks of Microsoft Corporation.

All other brand and product names are trademarks or registered trademarks of their respective companies.

6.3 Disclaimer Notice

The Information contained in this manual, including but not limited to any product specifications, is subject to change without notice. NUCLEUS DATA RECOVERY.COM PRIVATE LIMITED Provides no warranty with regard to this manual or any other information contained herein and here by Expressly disclaims any implied warranties of merchantability or fitness for any particular purpose with regard to any of the foregoing NUCLEUS DATA RECOVERY.COM PRIVATE LIMITED assumes no liability for any damages incurred directly or indirectly from any technical or typographical errors or omissions contained herein or for discrepancies between the product and the manual. In no event shall NUCLEUS DATA RECOVERY.COM PRIVATE LIMITED, Be liable for any incidental, consequential special, or exemplary damages, whether based on tort, contract or otherwise, arising out of or in connection with this manual or any other information contained herein or the use there of.

6.4 License Agreement

Kernel for Exchange Server Copyright © by NUCLEUS DATA RECOVERY.COM PRIVATE LIMITED

Your Agreement to this License

You should carefully read the following terms and conditions before using, installing, or distributing this software, unless you have a different license agreement signed by NUCLEUS DATA RECOVERY.COM PRIVATE LIMITED. The terms and conditions of this License describe the permitted use and users of each Licensed Copy of Kernel for Exchange Server. For purposes of this License, if you have a valid license, you have the right to use a single Licensed Copy of Nucleus Kernel.

Scope of License

Each Licensed Copy of Kernel for Exchange Server may either be used by a single person or used non-simultaneously by multiple people who use the software personally installed on a single workstation. All rights of any kind in Nucleus Kernel, which are not expressly granted in this License, are entirely and exclusively reserved to and by NUCLEUS DATA RECOVERY.COM PRIVATE LIMITED. You may not rent, lease, modify, translate, reverse engineer, decompile, disassemble, or create derivative works based on, Nucleus Kernel, nor permit anyone else to do so. You may not make access to Nucleus Kernel available to others in connection with a service bureau, application service provider, or similar business, nor permit anyone else to do so.

Warranty Disclaimers and Liability Limitations

Kernel for Exchange Server, and any and all accompanying software, files, data and materials, are distributed and provided as is and with no warranties of any kind, whether expressed or implied. In particular, there is no warranty for the quality of data recovered. You acknowledge that good data processing procedure dictates that any program, including Nucleus Kernel, must be thoroughly tested with non-critical data before there is any reliance on it, and you hereby assume the entire risk of all use of the copies of Nucleus Kernel covered by this License. This disclaimer of warranty constitutes an essential part of this License. In addition, in no event does NUCLEUS DATA RECOVERY.COM PRIVATE LIMITED authorize you or anyone else to use Kernel for Exchange Server in applications or systems where Kernel for Exchange Server failure to perform can reasonably be expected to result in a significant physical injury, or in loss of life. Any such use is entirely at your own risk, and you agree to hold NUCLEUS DATA RECOVERY.COM PRIVATE LIMITED harmless from any and all claims or losses relating to such unauthorized use.

General

This License is the complete statement of the agreement between the parties on the subject matter, and merges and supersedes all other or prior understandings, purchase orders, agreements, and arrangements. This License shall be governed by the laws of the State of Delhi. Exclusive jurisdiction and venue for all matters relating to this License shall be in courts and for a located in the State of Delhi, and you consent to such jurisdiction and venue. There are no third party beneficiaries of any promises, obligations, or representations made by NUCLEUS DATA RECOVERY.COM PRIVATE LIMITED herein. Any waiver by NUCLEUS DATA RECOVERY.COM PRIVATE LIMITED of any violation of this License by you shall not constitute, nor contribute to, a waiver by NUCLEUS DATA RECOVERY.COM PRIVATE LIMITED of any other or future violation of the same provision, or any other provision, of this License.